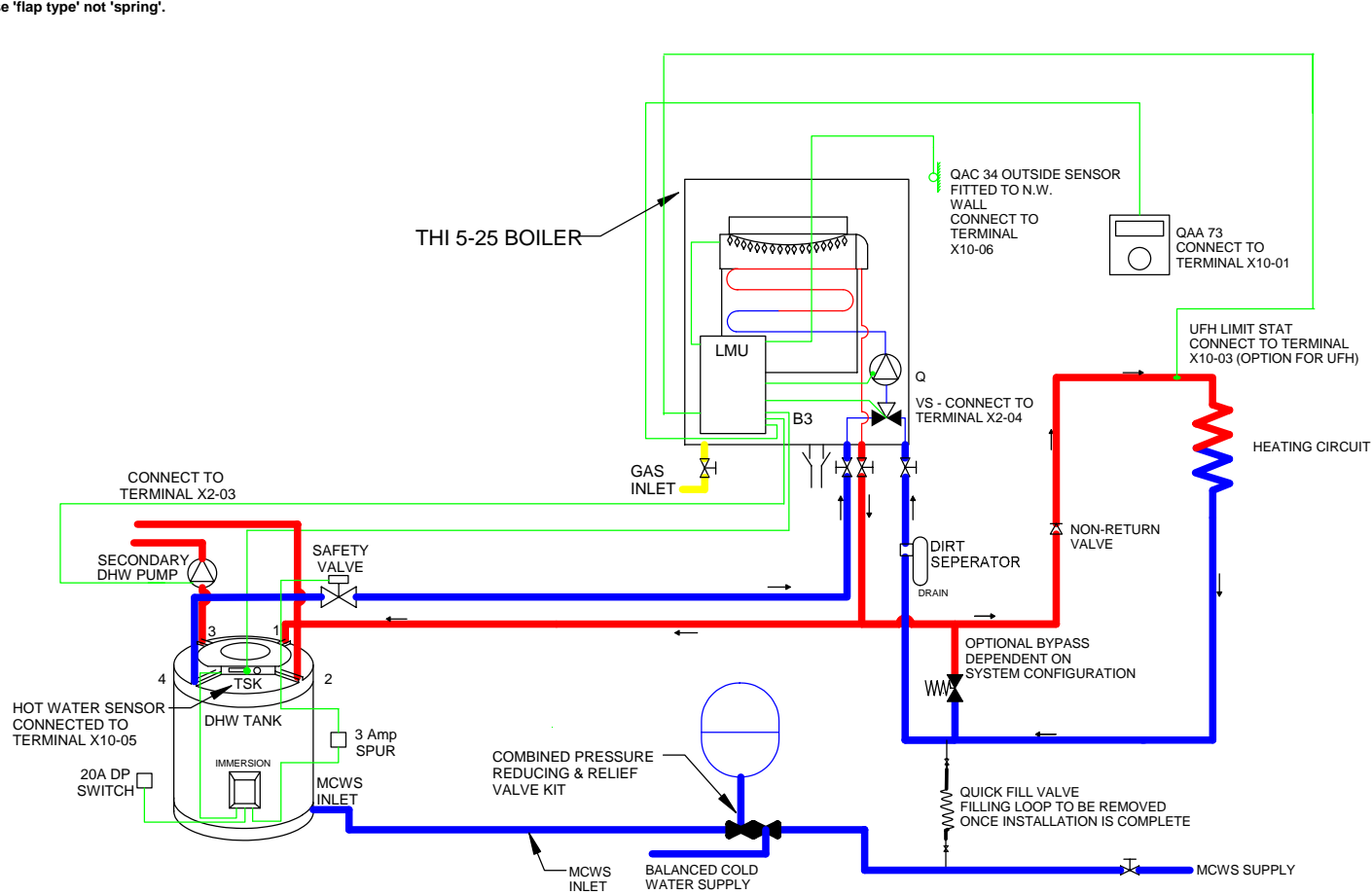


NOTES:

1. Cylinder stat should be set at 70 C
2. Use screened cables on all sensors (RS No. 368-671)
3. Any sensor cables over 25m increase CSA
4. Some neutrals & earths not shown for clarity
5. All remote electrical equipment shall have correctly rated local isolation
6. When selecting Non Return Valves ensure the closing pressure is less than the minimum power of the pumps. Use 'flap type' not 'spring'.

IMPORTANT:
This drawing to be read in conjunction with the full installation manuals supplied.



QAA73 FACTORY SETTINGS				
Function	Radiator circuit (CC1)		Under-floor heating circuit (CC1)	
	line QAA73	Value	line QAA73	Value
Slope	70	15	70	8
Tmax	72	80°C	72	50°C
Parallel shift	73	0	73	0
Room influence	75	CC1	75	CC1

THI 5-25 BOILER SINGLE CIRCUIT, EBS TANK WITH IMMERSION HEATER, HOT WATER & HEATING

DATE: JUL 05

DRG No B/THI 03

